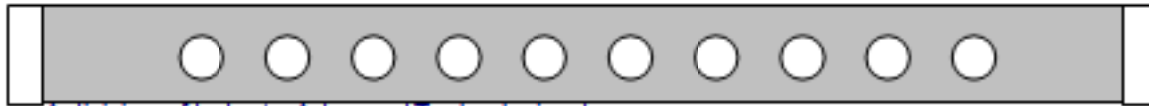


Intel-A-Jib™



A division of Industry Advanced Technologies, Inc.

Intel-A-Jib Setup Instructions

The Intel-A-Jib consists of the following components:

1. Fulcrum
2. Fulcrum tie-down
3. Main arm section (5 feet long)
4. Extension arm section (4 feet long)
5. Spoonbill
6. Tail section
7. Main parallel rod
8. Extension parallel rod
9. Spoonbill tilt adjuster
10. Weight rod
11. Weight retainers (2)
12. Small connector pins (2)
13. Medium connector pin
14. Large connector pin
15. Extra large connector pin



Some Images enlarged for clarity: 3



©2008, IAT, Inc.

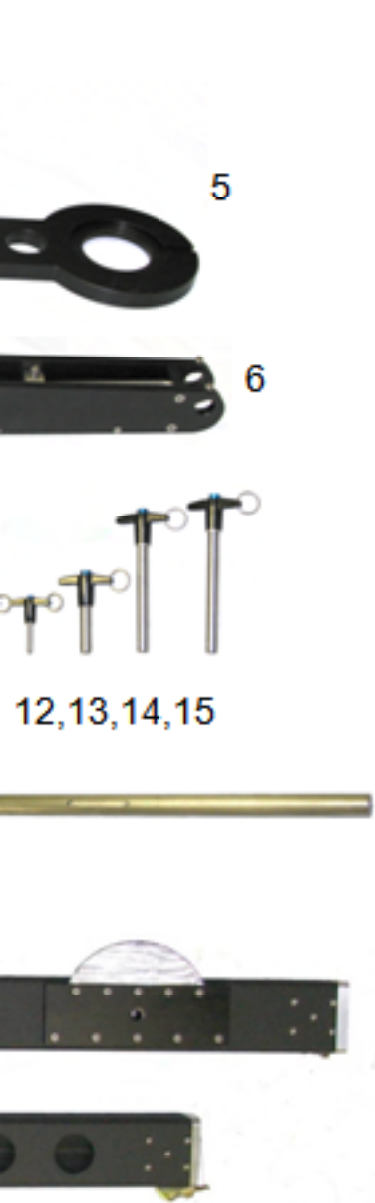
4



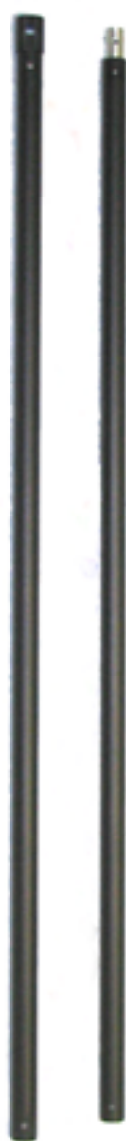
Intel-A-Jib Assembly:

Important: Before mounting camera or head on assembled jib, support spoonbill from below with an apple box height to allow spoonbill to rest on the ground.

Warning: Read label on fulcrum: tilt brake will not hold unbalanced load!



7,8

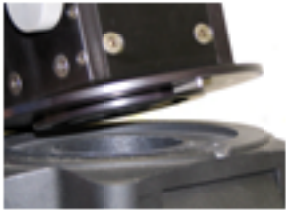


or similar or adjust jib support

Note: Assembly of Intel-A-Jib should take approximately two minutes (once you're familiar with the components)

Six-foot configuration:

1. Place fulcrum on to any Mitchell mount, usually either tripod, pedestal or dolly; be sure to align fulcrum key in
2. Thread the tie-down to the base of fulcrum
3. Place the main arm section in fulcrum aligning brake plate into brake slot, insert extra large connector pin through fulcrum side plates and arm.
4. Attach the spoonbill on end of extension arm inserting the male end of V lock joint into the female V lock joint
5. Install the main section parallel rod to the inside of the fulcrum side plate using the medium connector pin.
6. Attach the spoonbill tilt adjuster to the extension parallel rod using the small connector pin, then attach it to the rotate the knurled knob on tilt adjuster to center bubble level in spoonbill.
7. Place tailpiece on main section by inserting male end of V lock joint into female end of V lock joint and close
8. Finally insert the weight bar into the tailpiece with slot facing up and tighten thumbscrews into slot.
9. Mount camera, balance, and shoot!



1. keyway alignment



2. fulcrum tie-down



3. brake plate alignment

Intel-A-Jib Assembly:

Ten-foot configuration:

1. Place fulcrum on to any Mitchell mount, usually either tripod, pedestal or dolly; be sure to align fulcrum
2. Thread the tie-down to the base of fulcrum
3. Place the main arm section in fulcrum aligning brake plate into brake slot, insert extra large connector pin through fulcrum side plates and arm.
4. Place extension arm on main section by inserting male end of V lock joint into female end lock joint on r
5. Attach the spoonbill on end of extension arm inserting the male end of V lock joint into the female V lock
6. Install the main section parallel rod to the inside of the fulcrum side plate using the medium connector p
7. Attach the spoonbill tilt adjuster to the extension parallel rod using the small connector pin, then attach i rotate the knurled knob on tilt adjuster to center bubble level in spoonbill.
8. Place tailpiece on main section by inserting male end of V lock joint into female end of V lock joint and c
9. Finally insert the weight bar into the tailpiece with slot facing up and tighten thumbscrews into slot.
10. Mount camera, balance, and shoot!

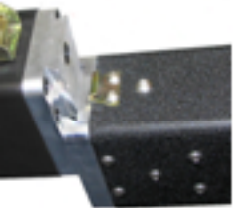
to mount keyway

ough

nt close latch.

e spoonbill with the large connector pin

atch.



4,5,8. dovetail joint



4,5,8. latch
engaged/open

key into mount keyway

in through

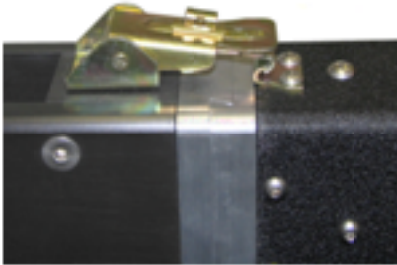
main section and close latch.

joint close latch.

pin.

t to the spoonbill with the large connector pin

close latch.



4,5,8. Latch engaged/closed



Assembled fulcrum
Top knob: tilt brake
Bottom knob: pan brake



6. Fulcrum from above
note parallel rod and
connector pin placement



7
n
c



8. Assembled spoonbill
note tilt adjuster and
connector pin placement



9. Weightrod showing
slot for thumbscrews
and fine balance weight